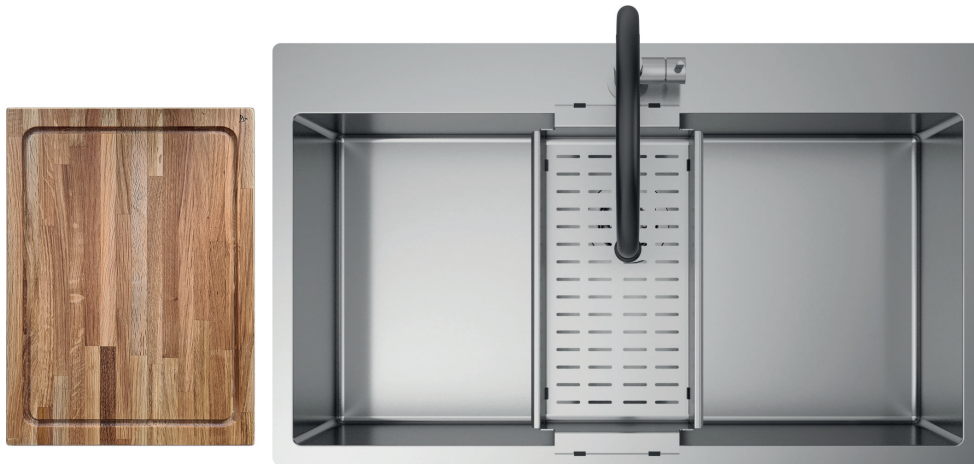


ARTINOX

AQUA 81

READY
Sinks



Installations

Topmount

Code

SAAI81

Description

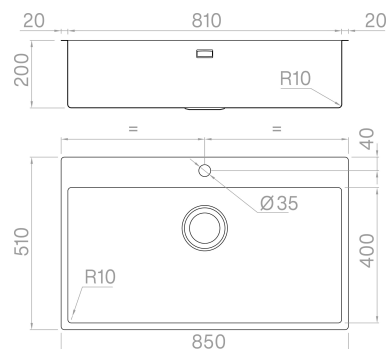
Aqua range offers sinks with generous capacity and essential design thanks to 10 mm inner corners. The positioning of the mixer is inside the operating area.

Accessories included

16 - COLANDER

Technical details

Material	AISI 304
Finishing	Brushed
Internal radius	welded 10 mm radius
External dimensions	850 x 510 mm
Basin dimensions	810 x 400 mm
Basin depth	200 mm
Drain	inox 3 ½"
Base	900 mm



Artinox SpA reserves the right to modify the characteristics of the products at any time. Technical data, illustrations and information are non-binding. Artinox SpA is not responsible for any mistakes of illustrations, text and/or translations.